

# Select

OFFICE FURNITURE



01284 767670

[www.selectofficefurniture.co.uk](http://www.selectofficefurniture.co.uk)  
[sales@selectofficefurniture.co.uk](mailto:sales@selectofficefurniture.co.uk)



Follow us on  
Instagram

@selectofficefurniture

## Seating

***Anniversary edition!***

*Celebrating 30 years of manufacturing  
quality business seating in Bury St Edmunds.*

***Sit happens, which is why we are here  
to help you find the perfect chair.***



01284 767670

All prices exclude VAT

# Select

OFFICE FURNITURE



Ickworth 04



Ickworth Mesh 05



Aldeburgh 06



Flexy 07



Ergohuman Mesh 08



Framlingham 09



Serenity 10



Harp 11



Felsham 12



Select Mesh 12



Saddle Stool 13



Rocker 13



Hadleigh 14



Verso 14



Stonham 14

## Discover Your Perfect Chair

Whether you need an elegant mesh-backed chair, a sturdy 24/7 model, or a simple operator's chair for your home office, we have a comprehensive selection to meet your needs.

Collaborating with some of the UK's leading manufacturers, we ensure that no detail is overlooked in providing you with the best and most reliable options.

Visit our showroom in Bury St Edmunds to experience our range of chairs, all proudly manufactured on-site offering quality, comfort, and exceptional value. Our chairs can be customized to fit your preference and our knowledgeable staff are here to assist you in finding the perfect chair thus ensuring it is perfectly adjusted for your comfort and providing expert advice on optimal usage.



**Multiple  
Fabric Choice**



**5 Year  
Warranty**

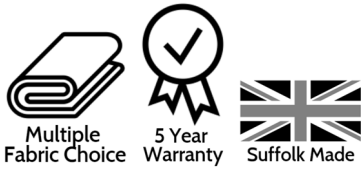


**Suffolk Made**

At Select Office Furniture, we specialize in a wide range of top-quality furniture, all proudly manufactured in the UK. Whether you need a compact modern desk for your home office, a fully furnished workspace, Reception, Conference Room, Breakout area or Café furniture, we can handle it all.

No project is too big or too small; our goal is to ensure you're thrilled with your new environment. From the initial planning stages, to the final touches of installation, we make outfitting or refurbishing your office a seamless and enjoyable experience. We're committed to leaving you smiling!





## Ickworth High Back - Operator Chair



Our High Back Operator Chair is available with a choice of two mechanisms; static or tilt. The tilt mechanism allows the user to adjust the seat angle. Ideally the user should be tilted slightly forward, relieving pressure on the lumbar region and improving posture. The moulded seat and back foam give excellent lumbar support and long term comfort.

Supplied with a 5 year warranty and a large choice of fabrics, leathers and vinyls.

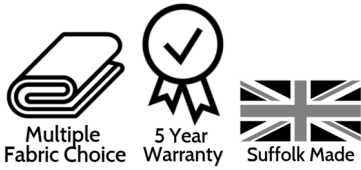
Code	Description	RRP	Net £
ICKS	Ickworth Static Operator Chair	£278.00	£149.50
ICKT	Ickworth Tilting Operator Chair	£296.00	£159.50
ICKD	Ickworth Static Draughtman	£387.00	£205.50

### Optional Extras

Code	Description	RRP	Net £
FA	Fixed Arms	£42.00	£25.50
HA	Height Adjustable Arms	£59.00	£29.50
DD	Drop Down Height Adjustable Arms	£79.00	£39.50
SS	Seat Slide (50mm seat depth adjustment) Only available with Tilt	£58.00	£29.00
IL	Inflatable Lumbar Support	£54.00	£24.00
ALU	Aluminium Base	£79.00	£42.50
LLC - LUC- GLI	Load lock castors - Load unlock castors - Glides	£34.00	£19.00

Colour options at back

Prices exclude VAT



## Ickworth Mesh Back - Operator Chair



Our Mesh Back Operator Chair is available with a choice of two mechanisms, static or tilt. The moulded seat foam and mesh back gives excellent lumbar support and long term comfort. The tilt mechanism allows the user to adjust the seat angle. Ideally the user should be tilted slightly forward, relieving pressure on the lumbar region and improving posture.

Supplied with a 5 year warranty and a large choice of fabrics, leathers and vinyls.

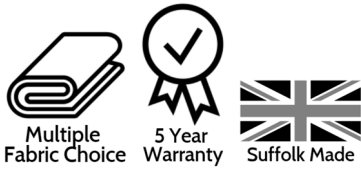
Code	Description	RRP	Net £
ICKMS	Ickworth Mesh Static Operator Chair	£307.90	£169.50
ICKMT	Ickworth Mesh Tilting Operator Chair	£327.70	£179.50

### Optional Extras

Code	Description	RRP	Net £
FA	Fixed Arms	£42.00	£25.50
HA	Height Adjustable Arms	£59.00	£29.50
DD	Drop Down Height Adjustable Arms	£79.00	£39.50
SS	Seat Slide (50mm seat depth adjustment) Only available with Tilt	£58.00	£29.00
ALU	Aluminium Base	£72.00	£42.50
LLC - LUC- GLI	Load lock castors - Load unlock castors - Glides	£29.70	£19.00

Colour options at back

Prices exclude VAT



## Aldeburgh Heavy Duty - Operator Chair



Our Heavy Duty High Back Operator Chair comes with a tilt mechanism which allows the user to adjust the seat angle. Ideally the user should be tilted slightly forward, relieving pressure on the lumbar region and improving posture. The moulded seat and back foam give excellent lumbar support and long term comfort.

Supplied with a 5 year warranty and a large choice of fabrics, leathers and vinyls.

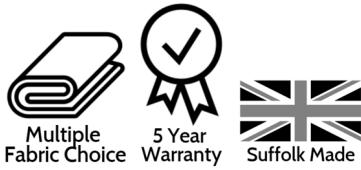
Code	Description	RRP	Net £
ALDT	Aldeburgh HD Tilting Operator Chair	£357.00	£185.00
ALDTRB	Aldeburgh HD Tilting Operator Chair with Ratchet Back	£378.00	£195.00

### Optional Extras

Code	Description	RRP	Net £
FA	Fixed Arms	£42.00	£25.50
HA	Height Adjustable Arms	£59.00	£29.50
DD	Drop Down Height Adjustable Arms	£79.00	£39.50
SS	Seat Slide (50mm seat depth adjustment)	£58.00	£29.00
IL	Inflatable Lumbar Support	£54.00	£24.00
LLC - LUC- GLI	Load lock castors - Load unlock castors - Glides	£34.00	£19.00

Colour options at back

Prices exclude VAT



## Flexy - Operator Chair



Our Poly Back Operator Chair is available with a choice of two mechanisms, static or tilt. Ideally the user should be tilted slightly forward, relieving pressure on the lumbar region and improving posture. The moulded seat foam back gives excellent long term comfort and the surprisingly comfortable back offers good support.

Supplied with a 5 year warranty and a large choice of fabrics, leathers and vinyls.

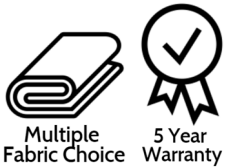
Code	Description	RRP	Net £
FLEXYS	Flexy Poly Back Static Operator Chair	£302.00	£169.00
FLEXYT	Flexy Poly Back Tilting Operator Chair	£316.00	£179.00

### Optional Extras

Code	Description	RRP	Net £
FA	Fixed Arms	£42.00	£25.50
HA	Height Adjustable Arms	£59.00	£29.50
DD	Drop Down Height Adjustable Arms	£79.00	£39.50
SS	Seat Slide (50mm seat depth adjustment) Only available with Tilt	£58.00	£29.00
ALU	Aluminium Base	£72.00	£42.50
LLC - LUC- GLI	Load lock castors - Load unlock castors - Glides	£34.00	£19.00

Colour options at back

Prices exclude VAT



## Ergohuman Elite G2

Part of our Comfort Plus range, the Ergohuman Elite G2 is not to be confused with cheap copies.

Offering a twin pivot synchro mechanism, seat slide, 4D adjustable arms, adjustable lumbar support, simple controls and many other features, this chair offers amazing support and adjustability. Image shows optional adjustable headrest.



Code	Description	RRP	Net £
EHE/LAM	Ergohuman Elite G2 Task Chair	£853.00	£640.00
EHE/HAM	Ergohuman Elite G2 Task Chair with Headrest	£888.00	£667.00

## Optional Extras

Code	Description	RRP	Net £
CH	Coat Hanger	£80.00	£60.00
LM	Leg Rest	£84.00	£64.00

## Enjoy Elite G2

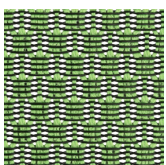
Another chair from our Comfort Plus range, offering many of the features of the Ergohuman Elite such as:

Synchro mechanism, seat slide, 4D adjustable arms, adjustable lumbar support and simple controls. Image shows optional headrest.



Code	Description	RRP	Net £
EJE/LAM	Enjoy Elite G2 Task Chair	£675.00	£506.00
EJE/HAM	Enjoy Elite G2 Task Chair with Headrest	£710.00	£533.00

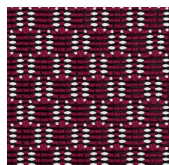
## Available in a choice of colours



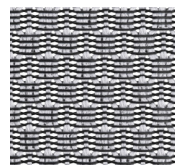
Green



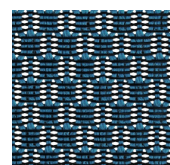
Black



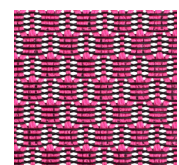
Scarlet



Grey



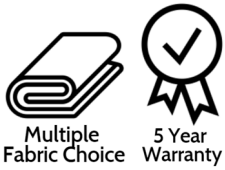
Cobalt



Pink

Prices exclude VAT





## Framlingham - Task Chair



With its distinctive curved back and stylish detailing, the Framlingham is ergonomically designed for maximum comfort. Its deep moulded foam ensures this chair is comfortable, ergonomic and durable. Available fully upholstered in a wide choice of fabrics, leathers or vinyls.

Supplied with a 5 year warranty and a Tilt or Synchro mechanism.

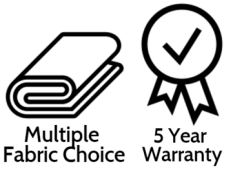
Code	Description	RRP	Net £
FRAM4/M17	Framlingham Task Chair with Synchro Mechanism	£502.00	£376.00
FRAM4/M2	Framlingham Task Chair with Tilt Mechanism	£423.00	£317.00
FRAM4P/M17	Framlingham Petite Task Chair with Synchro Mechanism	£490.00	£370.00
FRAM4P/M2	Framlingham Petite Task Chair with Tilt Mechanism	£408.00	£306.00

## Optional Extras

Code	Description	RRP	Net £
AJB	Height & Depth Adjustable Arms with Width Adjustable Soft Feel Topper	£110.00	£82.50
AW	Height and Width Adjustable Arms	£122.00	£92.25
HRUP	Upholstered fully Adjustable Headrest	£117.00	£87.50
SS	Seat Slide	£43.00	£32.50
IL	Inflatable Lumbar	£52.00	£39.00
CC	Coccyx Cut-Out	£26.00	£19.50
AB	Aluminium Base	£93.00	£67.50

Colour options at back

Prices exclude VAT



## Serenity Chair - **Back Care Range**



The Serenity is a supportive chair with great adjustability and is available with specialist adaptations such as inflatable seat, headrest and coccyx cut out for enhanced comfort. The Serenity is suited to the taller users due to the deep seat and large backrest.

Supplied with a 5 year warranty, a wide selection of fabrics, leathers or vinyls and a weight capacity of 150kg.

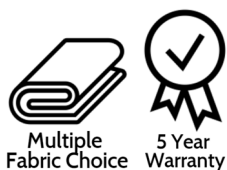
Code	Description	RRP	Net £
RED/M2	Serenity Task Chair with Tilt Mechanism	£427.00	£320.00
REDHR/M2	Serenity Task Chair with Tilt Mechanism and Headrest	£540.00	£405.00
REDHR/M3	Serenity Task Chair with Synchro Mechanism and Headrest	£540.00	£405.00

### Optional Extras

Code	Description	RRP	Net £
ADC	Chrome Height Adjustable Arms	£100.00	£75.00
AM	Drop-Down Height Adjustable Arms	£122.00	£92.25
SS	Seat Slide	£43.00	£32.50
IL	Inflatable Lumbar	£52.00	£39.00
IS	Inflatable Seat	£71.00	£53.00
CC	Coccyx Cut-Out	£26.00	£19.50

Colour options at back

Prices exclude VAT



## Harp Chair - **Back Care Range**



### 3 Different Sizes

Small	5ft and under
Standard	5ft to 5ft 11in
Tall	5ft 11 in and above

The Harp is a highly supportive ergonomic chair designed with user comfort in mind. With small, standard and tall options, The Harp is designed to accommodate individuals of different sizes whilst maintaining a consistent look throughout the working environment. The ergonomic dual zone deep moulded seat foam ensures comfort and full support.

The Harp is offered with plenty of optional extras and is our best selling back care chair.

Supplied with a 5 year warranty, a wide selection of fabrics, leathers and vinyls and a weight capacity of 150kg.

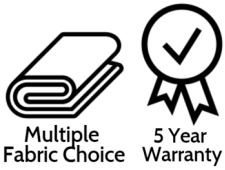
Code	Description	RRP	Net £
OC/HARP1/M2	Harp Tall Task Chair (large seat and standard back) with Tilt Mechanism	£397.00	£297.00
OC/HARP2/M2	Harp Standard Task Chair (standard seat and back) Tilt Mechanism	£390.00	£292.00
OC/HARP3/M2	Harp Small Task Chair (small seat and back) Tilt Mechanism	£362.00	£272.00

### Optional Extras

Code	Description	RRP	Net £
AW	Height, Width and Depth Adjustable Arms	£122.00	£92.25
SS	Seat Slide	£43.00	£32.50
IL	Inflatable Lumbar	£52.00	£39.00
IS	Inflatable Seat	£71.00	£53.00
CC	Coccyx Cut-Out	£26.00	£19.50
HR	Headrest (not available on Harp Small)	£106.00	£79.50

Colour options at back

Prices exclude VAT



## Felsham - Back Care Range

The Felsham heavy-duty operator chair is designed to accommodate larger users and has a weight capacity of 190kg. It comes with a tilt mechanism and ratchet back height adjustment.

Supplied with a 5 year warranty and a large choice of fabric colours.

Code	Description	RRP	Net £
FUHD/M7	Felsham Heavy Duty Task Chair with Tilt Mechanism	£613.00	£459.50

### Optional Extras

Code	Description	RRP	Net £
SS	Seat slide	£43.00	£32.50
IL	Inflatable Lumbar	£52.00	£39.00
AHD	Heavy Duty Height Adjustable Arms	£145.00	£108.50



## Select Mesh Back - Executive Chair

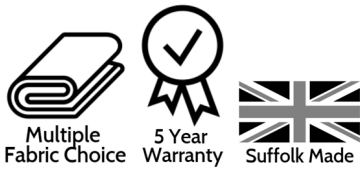
With its beautifully contoured mesh back and comfortable seat foam, our Select Mesh back chair comes with a seat slide and height, depth and angle adjustable arms. The balanced synchronous action encourages the user to move during the day.

Supplied with 2 year warranty.

Code	Description	RRP	Net £
SELECTMESH	Select Synchro Mesh Executive Chair	£398.00	£300.00
SELECTMESHHR	Select Synchro Mesh Executive Chair with wide Headrest	£445.00	£320.00

Colour options at back

Prices exclude VAT



Saddle Stool - Back Care Range



The Saddle Stool is ideal for computer work and clinical applications. The uniquely contoured triangular cushion allows a comfortable sitting position. The 'Saddle' posture reduces pressure points for long term comfort. It comes with gas seat height and tilt adjustment and is available in a wide selection of fabrics, leathers and vinyls.

Supplied with a 5 year warranty.

Code	Description	RRP	Net £
SADDLE/BK	Saddle Stool with Black Base	£295.00	£139.00
SADDLE/AL	Saddle Stool with Aluminium Base	£357.00	£191.00

Colour options at back

Rocker Stool



The Rocker is a modern stylish stool designed for many applications. It can be used in modern offices which use sit stand technology, stylish restaurants or in your own home. Height adjustable between 530mm - 760mm.

Code	Description	RRP	Net £
ROCK/1	Rocker Stool upholstered in choice of Fabric	£226.00	£169.50
ROCK/3	Rocker Stool upholstered in choice of Vinyl	£248.00	£181.50

Prices exclude VAT



**Hadleigh - Conference Chair**

A sleek and exceptionally comfortable conference chair with a chrome cantilever frame. Ideal for long meetings and stackable up to 6 high. Available in a wide selection of fabrics, leathers and vinyls.

Code	Description	RRP	Net £
HADLEIGH	Hadleigh Chrome Frame Cantilever Conference Chair	£234.00	£139.55



**Verso - Conference Chair**

A Nylon conference chair with optional upholstered seat pad. Stylish and comfortable. Stackable up-to 10 high.

Code	Description	RRP	Net £
VERSO	Verso Nylon Chair in White, Grey or Black	£139.00	£75.00
VERSO/U	Verso Nylon Chair in white or Grey Black	£150.00	£83.00



**Stonham - Conference Chair**

An exceptionally comfortable and stylish Polypropylene Chair in a selection of colours and frames. Other frames are available, please ask for details.



M Frame

Code	Description	RRP	Net £
STONHAM/M	Stonham M Frame Poly Conference Chair	£188.00	£112.00
STONHAM/K	Stonham K Frame Poly Conference Chair	£180.00	£108.00



K Frame



Visit our showroom to try them for yourself.  
**3 Western Way, Bury St Edmunds,  
 Suffolk, IP33 3SP**

Prices exclude VAT

## Colour Options - Plenty more colours available

### Phoenix



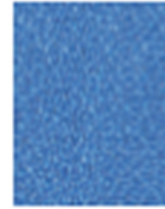
Sandstorm YP107



Apple YP108



Parasol YP109



Bluebell YP097



Solano YP110



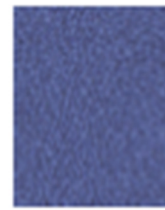
Nougat YP111



Campeche YP112



Scuba YP082



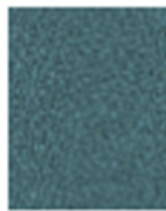
Bluefield YP021



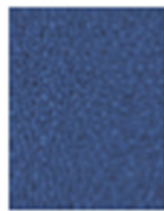
Olympic YP113



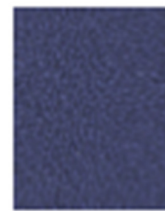
Blizzard YP081



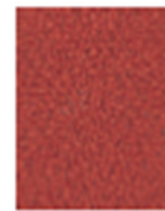
Windjammer YP047



Curacao YP005



Cayman YP024



Lobster YP076



Pasao YP019



Rainforest YP114



Ocean YP100



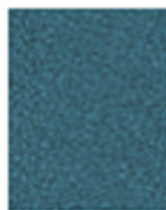
Tarot YP084



Jamaica YP027



Sombrero YP046



Montserrat YP011



Costa YP026



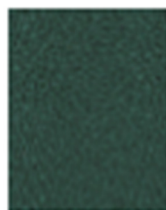
Guyana YP051



Calypso YP106



Havana YP009



Taboo YP045



Arawak YP016



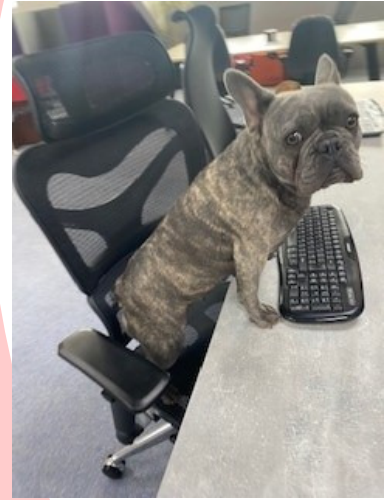
Tobago YP030



Belize YP105

# Select

## OFFICE FURNITURE



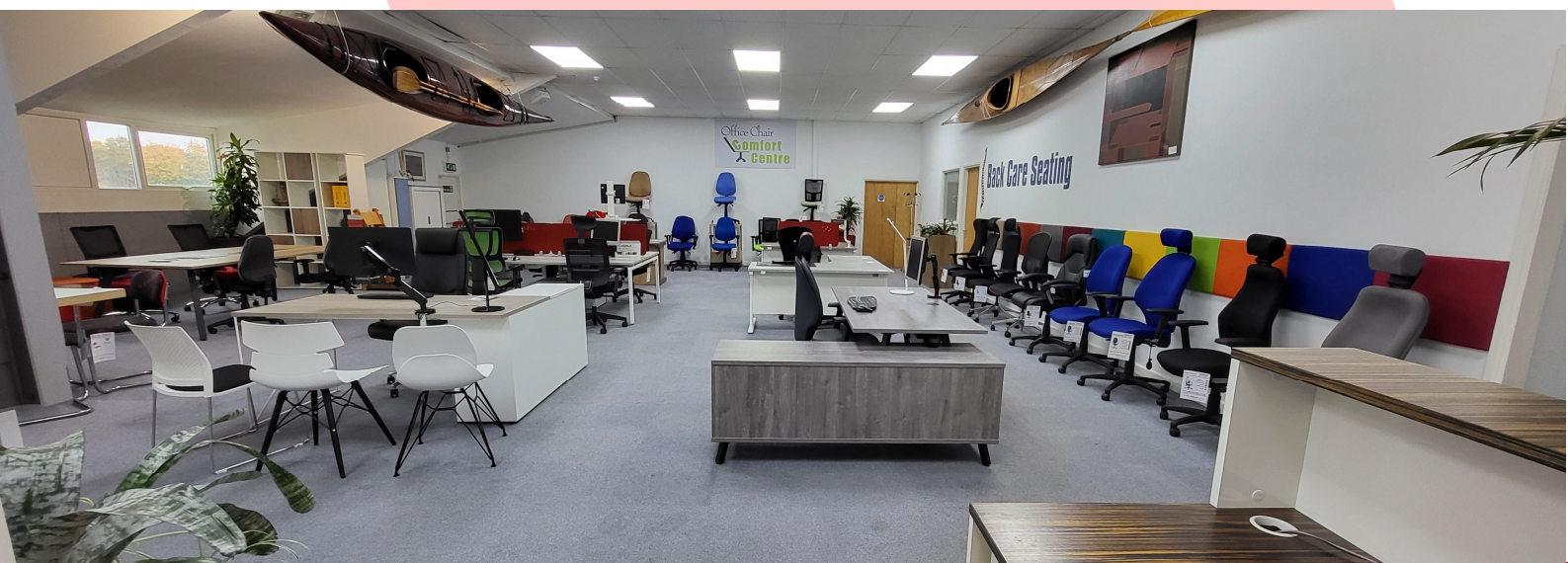
Since 1994, Select Office Furniture has been proudly manufacturing high-quality seating in Suffolk with a dedication to customer satisfaction. With decades of experience, we offer unmatched quality, variety, value, and service.

Our primary goal is to help you find the perfect furniture to meet your needs, ensuring a fulfilling experience with Select Office Furniture every step of the way.

Visit Our Showroom:

3 Western Way, Bury St Edmunds IP33 3SP

Showroom opening times: Monday to Friday 8.30am—5.30pm



Select Office Furniture

3 Western Way

Bury St Edmunds

IP33 3SP

T: 01284 767670

[sales@selectofficefurniture.co.uk](mailto:sales@selectofficefurniture.co.uk)

[www.selectofficefurniture.co.uk](http://www.selectofficefurniture.co.uk)



@selectofficefurniture